



Double roads - Freeways - Highways - Expressways - Motorways - Parkways - Avenues  
Backroads - Lanes - Living streets - Parks - Multi Modal roads

## LED T-Street Light Flexys

## TECHNICAL DATA

FPE street hanging luminaires are technical luminaires that are designed to fulfil most demanding light calculation scenes like S, ME, CE classes with different adaptation to local lighting standards.

### Electrical characteristics

- 220-240V input
- Power factor at full load more than 0,95.
- Up to 99% driver efficiency at full load with Philips Xitanium led driver.
- Dimming options: Lumistep, Line switch as standard; DALI, 1-10V and Dynadimmer upon request
- 6kV surge protection as standard; 10kV protection upon request.
- Protection class I or protection class II.



### Mechanical characteristics

- Housing made of aluminium
- Lamp is equipped with 60mm pole connector
- Equipped with connecting electrical cable 0,5m, longer cables upon request
- Finish made of anodisation and dust painted with epoxy paint thermal treatment to ensure long-term environmental protection against all weather conditions. RAL 9006 or upon request.
- All screws are made of stainless steel.
- All gaskets are made of ozone and UV resistant silicone for IP66 protections.




### LEDs




We are using high efficient Cree **XTE LEDs** that ensures long lifetime and highest lm/w efficiency in industry.

In below spreadsheet there are stated total – system W. Below lumen is LED lumen. System lumen is available in elumdata file and is lower than LED lumen for app 5%. Standard colour temperature is 4000K. We offer also 3000K version with app 13% lower lumen output. In addition, up to 6500K versions are available with same lumen output as 4000K.



XTE LED		
48 LED		
350 mA	55W (sys)	6.550 lm (LED)
500 mA	79W (sys)	8.850 lm (LED)
72 LED		
350 mA	80W (sys)	9.500 lm (LED)
500 mA	116W (sys)	12.800 lm (LED)





Upon request, we can supply also the lamp with driving current between 350mA and 500mA for XTE LED. Driving current below 800mA for XPL LED is also available.



## TECHNICAL DATA

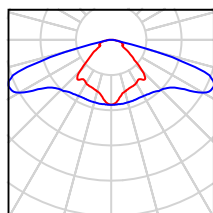
### Optical characteristics

- Standardly we are using PMMA that is 100% UV resistant which prevents against yellowing over the entire lifetime of FPE luminaires.
- Polycarbonate lenses ensure high impact resistance.
- Photometric files are available upon request.

### Optic B

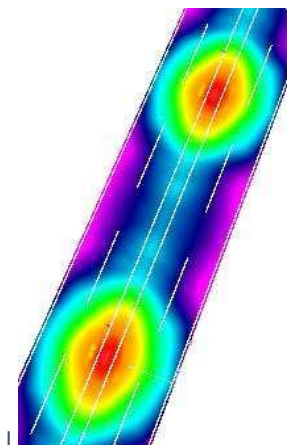
#### Universal symmetrical optics

Suitable for ME and S road lighting classes, parking's, pathways, with lamp position in middle



Luminous flux (luminaire): 8.000 lm  
 Luminaire wattage: 78 W  
 Arrangement: middle of the roadway  
 Road width: 6 m + 6m, median 1m  
 Lamp distance: 28 m  
 Mounting height: 8 m

	$L_{av}$ (cd/m <sup>2</sup> )	$U_0$	$U_l$	TI (%)	SR
Calculated values	0.95	0.46	0.67	13	0.88
Required values MEW4	≥0.75	≥0.40	≥0.50	≤15	≥0.50
Fulfilled/Not fulfilled	<input type="checkbox"/>	<input type="checkbox"/>	<input type="checkbox"/>	<input type="checkbox"/>	<input type="checkbox"/>

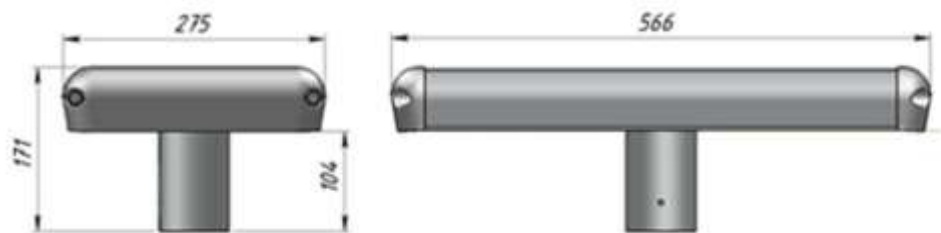


Above is just catalogue examples, please send us specific road situation and we will advise you the right lamp based on the lighting calculation.



## TECHNICAL DATA

### 48, 72 LED lamp



Gross weight: 8,8kg

Net weight: 8,2kg

Wind area: 0,035m<sup>2</sup>

Box dimension: 60 x 30 x 20 cm

Full euro pallet dimension: 24 units: 80 x 120 x 150 cm

Operating temperature from -40°C up to 55°C.

Standard warranty is 5 years and can be optionally extended

		PROTECTION CLASS	LED TYPE	NUMBER OF MODULES	OPTICS	mA	REGULATION	LENGTH OF CABLE	SURGE PROTECTION
L	S	1 protection class I	A XTE-4500K	4 4 modules (48led)	B Universal symmetrical	35 300mA	R No regulation	NO INDICATION 0,5 meter	NO INDICATION 6kV protector
		2 protection class II	C XTE-4000K	6 6 module (72led)		40 400mA	A Dyna dimmer	3 3 meters	P 10kV protector
			B XTE-3000K			45 450mA	G Lumi step 6 h	4 4 meters	
						50 500mA	K Lumi step 8 h	...	
							F Line switch ositive	12 12 meters	
							M Line switch negative		
							D DALI		
							X 1-10V		



Manufacturer reserves all rights to make changes in materials and components used in its products. All data are subject to change without prior notice.